



Logistics Bridging Hearts



**TATSUMI SHOKAI CO.,LTD.
PLANT & PROJECT DIVISION**

Professional freight forwarding group specialized in total logistics and consulting services with our global field over the continent heavy lift planning and various solutions for your special transportation.

**TATSUMI SHOKAI CO.,LTD.
PLANT & PROJECT DIV.**

TATSUMI BUILDING 3-8-7
IIDABASHI, CHIYODA-KU
TOKYO 102-0072 JAPAN
TEL +81-3-3265-4114 FAX +81-3-3265-9319

**TATSUMI SHOKAI CO.,LTD.
HEAD OFFICE**

4-1-1 CHIKKO, MINATO-KU
OSAKA CITY 552-0021 JAPAN
TEL +81-6-6576-1841 FAX +81-6-6576-1848

TATSUMI's Mission

Encountered 100th anniversary in 2020, we proved our value to customers with taking simple question why our services have been loved for such a long time and managed to work over the century. While our customers have kept using our high valued services, we have always examined ourselves to seek more valued services and meet customers requirement order by order. Through our logistics task for the various demand and order, we challenge with our most effective and economical and ecological process to customers.

Tatsumi's Goal:

To provide the highest quality service by continuous improvement and through the skill of our most valuable method – our employees. Safety. Strive to reach our goal of zero accidents.

Tatsumi's Fields:

In to the Global – Asia, Oceania, India and Middle East,
Europe, Africa and North & South America.
Via Air – Sea and Land.

Tatsumi's Providing Services:

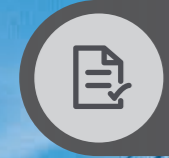
Oil & Gas Fields
Petrochemical
Power generation
Infrastructures, etc.

We are proud of being able to supply our high-quality services sustainably with well-organized operation system. We look forward to seeing you on your future need and we answer with trustworthy services.



Air, Sea and Land Freight Forwarding

TATSUMI's global network can provide the best transportation. "Anything, Anywhere and Anytime".



Documentation and Customs Clearance

TATSUMI's documentation skills are based on "Japan Quality" which leads to smooth customs clearance. It will minimize unnecessary time, cost and risk.



Monitoring and Reporting

TATSUMI's monitoring will keep you updated for any cargo movement. It can find out the risk factors and clear them in early stage.



Investigation

TATSUMI's preliminary survey is hybrid of physical work and Technology. Our survey which is conducted with high-expertise can provide you solutions.



Supervising

TATSUMI's members are professional field operators. Their "Safety" spirits will influence everybody to be as "ONE TEAM" and get "Success".



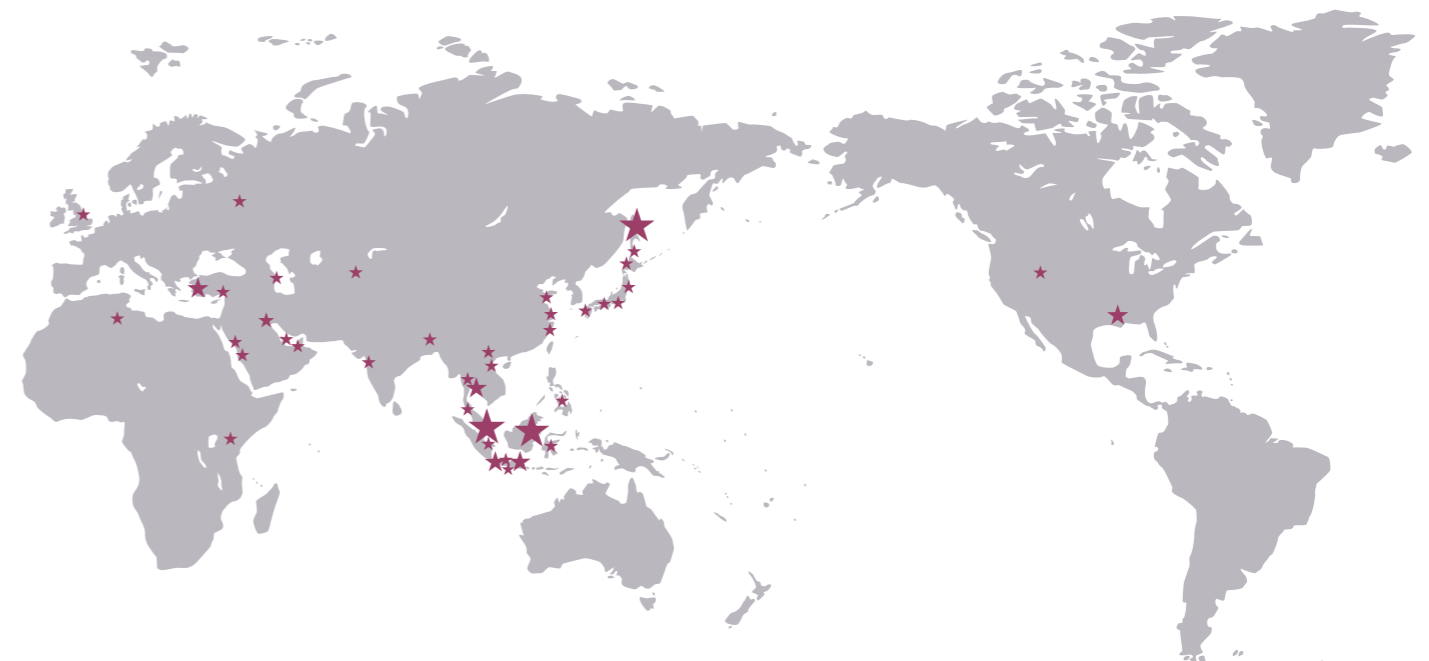
Safety and On Time Delivery

We have realized by carrying out each services with high quality.

TATSUMI's Projects

Period	Project	Site Location	Total Volume (F/T)
1995-1998	Electrical Power Plant Project	Surabaya, Indonesia	120,000
1996	Bottling Plant Project	Kobe, Japan	5,000
1996-1997	Textile Manufacturing Plant Project	Shanghai, China	8,000
1996-1997	Resin Manufacturing Plant Project	Jakarta, Indonesia	3,800
1996-1998	Office Bldg. Construction Project	Yuzhno-Sakhalinsk, Russia	5,000
1997-1998	Copper Smelting Plant Project	Surabaya, Indonesia	50,000
1997-1999	Fertilizer Plant Project	Bontang, Indonesia	3,500
1998	Oil Rig Facilities Project	Sakhalin, Russia	8,000
1998-1999	Fertilizer Plant (AMJ) Project	Bontang, Indonesia	15,200
1998-1999	Jetty Construction Project	Bontang, Indonesia	4,100
2000-2001	Phenol Plant Project (SPH)	Singapore	32,000
2001	Power Station Utah Project	Salt Lake, Utah, USA	5,000
2001	Casting Manufacture Equipment Project	Qingdao, China	2,500
2001-2002	Chemical Plant Project (MEA)	Singapore	11,000
2002	Machinery, Equipment	Ningbo, China	4,000
2002	Chemical Plant Project	Hull, United Kingdom	13,000
2002-2003	Pipeline Project	Baku, Azerbaijan	67,000
2003	Oil Refinery Project	Yaroslav, Russia	41,000
2003	Pipe Line Project (BTC)	Ceyhan, Turkey	104,800
2003-2004	Ethylene Plant (NSC REVAMP) Project	Izmir, Turkey	18,000
2003-2004	Polypropylene Plant (2nd EPP) Project	Izmir, Turkey	2,500
2003-2006	LNG Plant/Jetty Const. Project	Sakhalin, Russia	32,000
2003-2007	LNG Plant/Civil Const. Project	Sakhalin, Russia	28,000
2006-2007	Uzbekistan Rail Project	Tashkent, Uzbekistan	11,000
2006-2008	MEG Project	Rabigh, Saudi Arabia	80,000
2007-2009	Thai Ethylene Project	Map Ta Phut, Thailand	80,000
2007-2009	LNG Plant Project	Mumbai, India	11,000
2008-2009	5TF Tafmer Project	Singapore	12,000
2008-2009	Elastomer Project	Singapore	50,000
2008-2009	PP Project	Singapore	13,000
2009-2010	Ethylene Plant Project	Jeddah, Saudi Arabia	240,000
2010-2013	Habshan-5 Process Project	Abu Dhabi, UAE	270,000
2011-2013	LNG Plant Project	Central Sulawesi, Indonesia	70,000
2011-2013	Superabsorbent Polymers & Acrylic Acid Plant Project	Cilegon, Indonesia	18,000

Period	Project	Site Location	Total Volume (F/T)
2011-2014	Barzan Onshore Project	Ras Laffan, Qatar	625,000
2014-2015	P2B Fertilizer Project	Palembang, Indonesia	20,000
2014-2015	CAPEX Ethylene Project	Cilegon, Indonesia	24,000
2014-2018	Refinery and Petrochemical Project	Nghi Son, Vietnam	1,500,000
2015-2019	Ethan Cracker Project	Plaquemine, Louisiana, USA	97,800
2016-2019	Oil Refinery Expansion Project	Cilacap, Indonesia	45,000
2017-2019	New Airport Construction Project	Bohol, Philippines	7,000
2018-2019	Geothermal Power Plant Project	Olkaria, Kenya	31,000
2018-2022	Oil Separation and Compression Plant Project	Hassi Messaoud, Algeria	55,000
2019-2020	Chemical Plant Project	Plaquemine, Louisiana, USA	28,300
2019-2021	Olefin Plant Extension Project	Map Ta Phut, Thailand	50,000
2020-2022	Biomass Power Plant Project	Ishikari, Japan	30,000
2021-2022	Biomass Power Plant Project	Ishinomaki, Japan	5,500
2021-2022	Biomass Power Plant Project	Omaezaki, Japan	43,000
2021-	Refinery Project	Basrah, Iraq	1,100,000
2022	SEZ Development Project	Dhaka, Bangladesh	1,000
2022-2024	Biomass Power Plant Project	Bach Ninh, Vietnam	6,900
2022-	Copper Smelting Plant Project	Surabaya, Indonesia	435,000
2023	Synthetic Rubber Plant Project	Rayong, Thailand	5,700
2023-2024	Biomass Power Plant Project	Imari, Japan	22,000
2023-2024	Contact Lens Manufacturing Plant Project	Kulim, Malaysia	3,100



Seamless "ONE TEAM" achieved spectacular volume transportation.



140 Conventional Vessels, We operated.



Opened Plant Jetty as "International Seaport".



TATSUMI's
Projects

Indonesia

P2B Fertilizer Project

Palembang, Indonesia

Period
2014 - 2015

Total Volume
20,000 F/T

Carbamate Condenser / 354ton / LWH 27.0 x 5.0 x 5.6m, etc.

Obtained Special Permission for the operation at River Port of countryside.



TATSUMI's
Projects

Indonesia

Copper Smelting Plant Project

Surabaya, Indonesia

Period
2022- Ongoing

Total Volume
435,000 F/T

Anode Furnace 3units / @134ton / @LWH 14.8 x 6.3 x 6.3m, etc.

Accomplishments which accumulated over 100 years leads to Success of the Project.



TATSUMI's
Projects

Thailand

Olefin Plant Extension Project

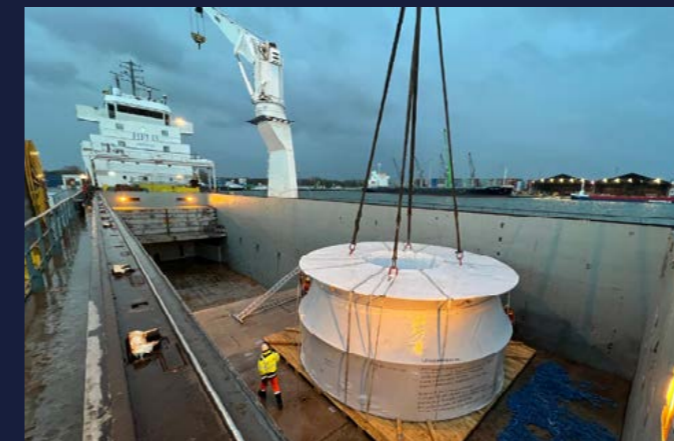
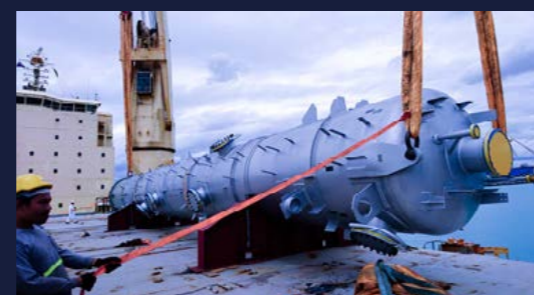
Map Ta Phut, Thailand

Period
2019 - 2021

Total Volume
50,000 F/T

C2 tower / 360ton / LWH 86.5 x 8.5 x 5.1m, etc.

Demonstrated Our Documentation Skill for BOI system.



Accurate and solid lashing with precise instruction ensures steel structure transport safer.



TATSUMI's
Projects

Kenya

Geothermal Power Plant Project

Olkaria, Kenya

Period
2018 - 2019

Total Volume
31,000 F/T

Generator 2units / @150ton / @LWH 10.5 x 4.6 x 4.1m, etc.

Breakthrough the Difficulty of Africa. Go through the road of Savannah.



TATSUMI's
Projects

UAE

Habshan-5 Process Project

Abu Dhabi, UAE

Period
2010 - 2013

Total Volume
270,000 F/T

Demeternizer 2units / @830ton / @LWH 99.0 x 8.0 x 8.5m, etc.

Obtained Permissions and Approvals which were enforced during project.



TATSUMI's
Projects

Algeria

Oil Separation and Compression Plant Project

Hassi Messaoud, Algeria

Period
2018 - 2022

Total Volume
55,000 F/T

Compressor / 100ton / LWH 15.3 x 5.1 x 4.4m, etc.

Land Transportation from discharging port to Site : 800km.



TATSUMI's
Projects

Qatar

Barzan Onshore Project

Ras Laffan, Qatar

Period
2011 - 2014

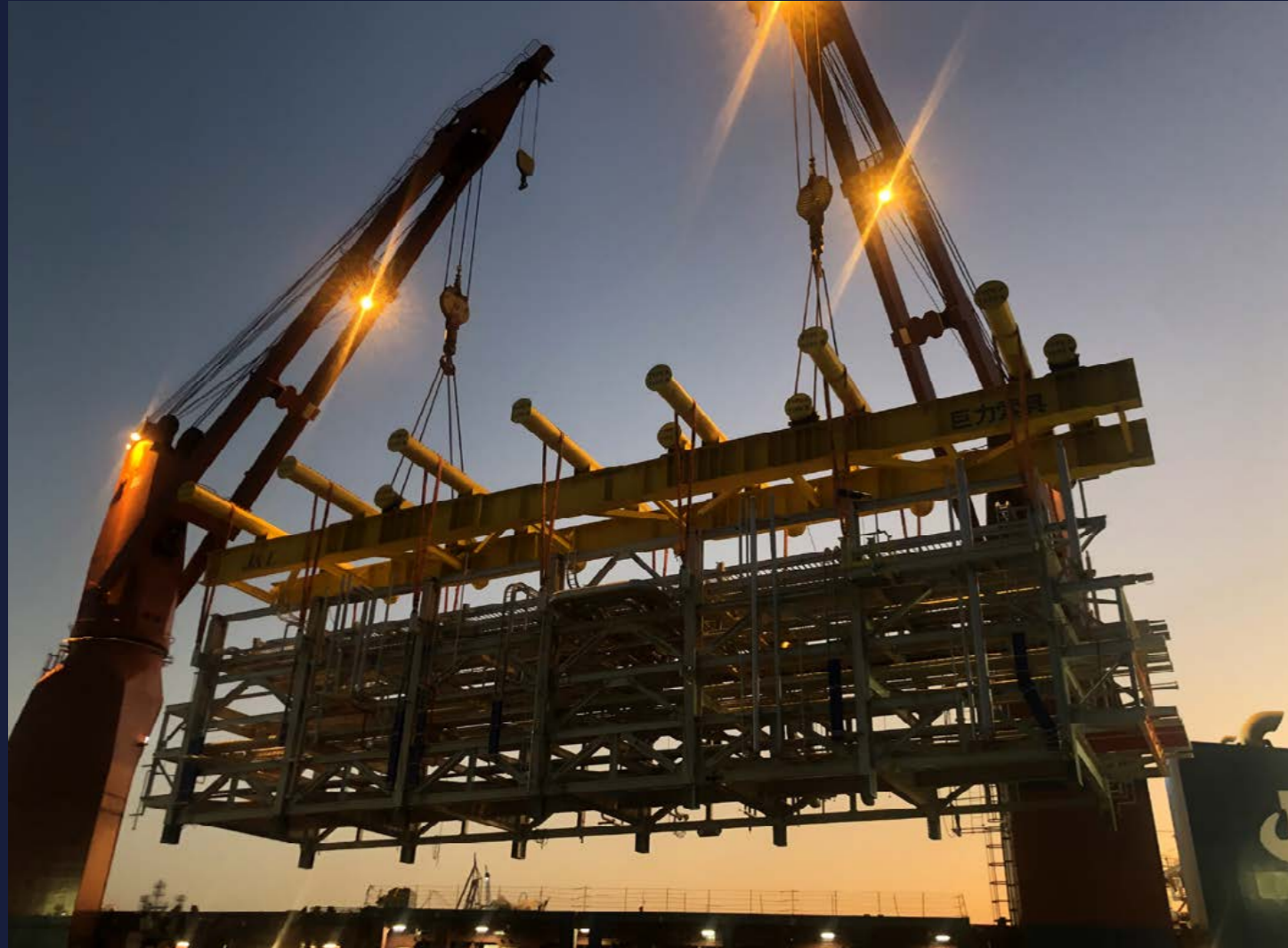
Total Volume
625,000 F/T

AGR Absorber 2units / @1,300ton / @LWH 52.5 x 8.0 x 7.5m, etc.

Negotiated and Obtained Special Approval from Customs.

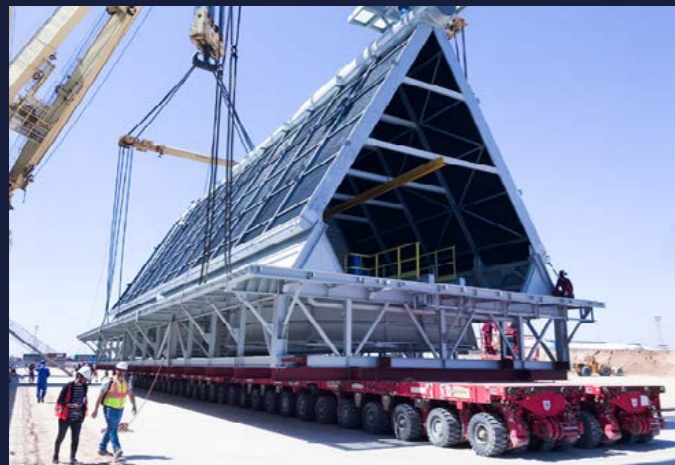


"New History" which contributes IRAQ's economic growth and reconstruction of the country.



Dealing with over 2,000 Original Legalized Documents to Iraq for Customs Clearance.

Operating "New Era Module Transportation".



TATSUMI's
Projects

USA

Chemical Plant Project

Plaquemine, Louisiana, USA

Period
2019 - 2020

Total Volume
28,300 F/T

Reactor 2units / @256ton / @LWH 32.0 x 5.4 x 5.9m, etc.

Fighting with Nature and Public Agency.



TATSUMI's
Projects

Italy to
Japan

Immediate Oversize Transportation by AIR

Venice, Italy to Narita, Japan

Period
2011

Total Volume
250 F/T

Evaporator / 10ton / LWH 7.1 x 2.3 x 2.9m, etc.

Full chartered "Antonov An-124-100".



TATSUMI's
Projects

Japan

Biomass Power Plant Projects

Raising the "Japan Quality" with Tatsumi's management.

Location	Period	Total Volume	Largest unit
Ishikari, Hokkaido	2020- 2022	30,000 F/T	IP/LP Package / 120ton / LWH 8.0 x 5.3 x 4.7m, etc.
Ishinomaki, Miyagi	2021- 2022	5,500 F/T	Steam Turbine / 39ton / LWH 6.7 x 4.2 x 3.8m, etc.
Omaezaki, Shizuoka	2021- 2022	43,000 F/T	IP/LP Package / 240ton / LWH 8.2 x 5.3 x 4.8m, etc.
Imari, Saga	2023- 2024	22,000 F/T	Surface Condenser / 42ton / LWH 9.3 x 4.1 x 4.2m, etc.





No Border for Our Operations.